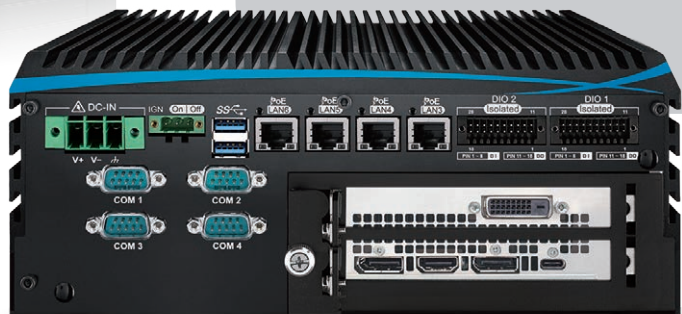


ECX-1400/1300 PEG

Workstation-grade Intel® Xeon®/Core™ i7/i5/i3 (CFL-R)
AI Computing System with NVIDIA® GeForce RTX™ Graphics

- 8 Cores 9th Generation Intel® Xeon®/Core™ i7/i5/i3 (Coffee Lake Refresh) with workstation-grade Intel® C246 Chipset
- 2 DDR4 2666MHz Memory, up to 64GB (ECC/Non-ECC)
- Supports up to 250W NVIDIA® or AMD Graphics card
- NVIDIA® Tesla®/Quadro®/GeForce® graphics card delivers leading AI computing productivity by advanced NVIDIA® CUDA® cores
- Multiple VGA, DVI, HDMI and DisplayPort display interfaces support max 7 independent displays, up to 8K Resolution
- Multiple external USB 3.1 Gen 2 supports up to 10Gbps data transfer
- 6 Independent GigE LAN with 4 IEEE 802.3at PoE+
- 32 Isolated DIO, 6 USB 3.1, 4 COM RS-232/422/485
- Storage : 4 2.5" SSD Tray, 1 CFAST, 1 M.2, 4 SATA III
- Expansion : 2 Mini PCIe/mSATA, 1 M.2
- 3 External SIM Socket for WiFi/4G/3G/LTE/GPRS/UMTS
- 12V to 36V DC Power Input with 80V Surge Protection
- Configurable Ignition Power Control



Automatic LPR



Autonomous Vehicles



Robotic Control



Public Surveillance



Specifications

System

Processor	8 Cores Intel® Xeon®/Core™ i7/i5/i3 Processor (CFL-R 5)
Chipset	Intel® C246
BIOS	AMI
SIO	IT8786E
Memory	2 DDR4 2666MHz SO-DIMM, up to 64GB (ECC/Non-ECC)
OS	Windows 10, Linux

I/O Interface

Serial	4 COM RS-232/422/485 (ESD 8KV)
USB	- 6 USB 3.1 (External) - 1 USB 2.0 (Internal)
Isolated DIO	ECX-1400 Series : 32 Isolated DIO : 16 DI, 16 DO ECX-1300 Series : 16 GPIO
LED	Power, HDD, PoE, Wireless
SIM Card	3 External SIM Card Socket

Expansion

Mini PCIe	2 Full-size for PCIe/USB/External SIM Card/mSATA
M.2	1 M.2 Key E Socket
PCIe	- 1 PCIe x16 Slot with x16 signal - 1 PCIe x16 Slot with x4 signal

Graphics

Graphics Processor	Intel® UHD Graphics 630 Independent Graphics : By request
Interface	Up to 7 independent displays : - 1 VGA : Up to 1920 x 1200 @60Hz - 1 DVI : Up to 1920 x 1200 @60Hz - 2 DisplayPort : Up to 4096 x 2304 @60Hz - By requested PEG

Storage

SATA	4 SATA III (6Gbps) support S/W RAID 0, 1, 5, 10
mSATA	2 SATA III (Mini PCIe Type, 6Gbps)
M.2	1 M.2 Key B Socket
Storage Device	- 1 CFast Socket, Push-in/Push-out Ejector - 4 Front-access 2.5" SSD/HDD Tray

Audio

Audio Codec	Realtek ALC892, 5.1 Channel HD Audio
Audio Interface	1 Mic-in, 1 Line-out

Ethernet

LAN 1	Intel® I219LM GigE LAN supports iAMT 12.0
LAN 2	Intel® I210 GigE LAN

PoE (ECX-1400)

LAN 3 to LAN 6	GigE IEEE 802.3at (25.5W/48V) PoE+ by Intel® I350
----------------	---

Power

Power Input	- 12V to 36V for PEG card TDP less than 130W - 24V to 36V for PEG card TDP more than 130W
Power Interface	3-pin Terminal Block : V+, V-, Frame Ground
Ignition Control	16 Mode (Internal)
Remote Switch	3-pin Terminal Block
Surge Protection	Up to 80V/1ms Transient Power

Others

TPM	Optional Infineon SLB9665 supports TPM 2.0, LPC Interface
Watchdog Timer	Reset : 1 to 255 sec./min. per step
Smart Mgmt.	Wake on LAN, PXE supported
HW Monitor	Monitoring temperature, voltages. Auto throttling control when CPU overheats.

Mechanical

Dimensions	260mm x 215mm x 104.1mm (10.24" x 8.46" x 4.10")
Weight (w/o Graphics Card)	5.5 kg (12.13 lb)
Mounting	- Wallmount by mounting bracket - DIN Rail Mount (Optional)

Environment

Operating Temp.	-20°C to 45°C (-4°F to 113°F)
Storage Temp.	-40°C to 85°C (-40°F to 185°F)
Humidity	5% to 95% Humidity, non-condensing
Relative Humidity	95% @ 45°C
Shock/Vibration	- IEC 61373 : 2010 - Railway Applications : Rolling Stock Equipment, Shock and Vibration Tests
EMC	CE, FCC, EN50155, EN50121-3-2

* The rights of all brand names, product names and trademarks belong to their respective owners.
Copyright © 2019 Vecow Co., Ltd. All rights reserved.

Order Information

Model Name	GigE LAN	PoE+	SSD Tray	USB 3.1	COM	SIM	Isolated DIO	GPIO
ECX-1400 PEG	6	4	4	6	4	3	32	-
ECX-1300 PEG	2	-	-	-	-	-	-	16

CPU List

Series	CPU	Cores	GHz	TDP (W)	CPU	Cores	GHz	TDP (W)	ECC RAM	
Intel® Xeon®	E-2278GE	8	4.7	80	E-2176G	6	4.6	80	Yes	
	E-2278GEL	8	3.9	35						
	E-2226GE	6	4.6	80						
Intel® Core™	i7-9700E	8	4.4	65	i7-8700	6	4.6	65	N/A	
	i7-9700TE		3.8	35	i7-8700T	6	4	35		
	i5-9500E	6	4.2	65	i5-8500	6	4.1	65		
	i5-9500TE		3.6	35	i5-8500T	6	3.5	35		
	i3-9100E	4	3.7	65	i3-8100	4	3.6	65		Yes
			i3-9100TE	3.2	35	i3-8100T	4	3.1		

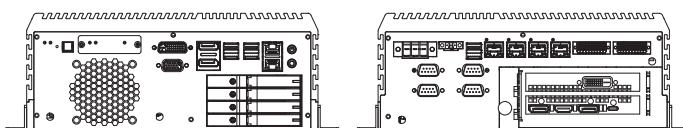
Accessories

DDR4 32G	Certified DDR4 32GB 2666MHz RAM
DDR4 16G	Certified DDR4 16GB 2666/2400/2133 MHz RAM
DDR4 8G	Certified DDR4 8GB 2666/2400/2133 MHz RAM
DDR4 4G	Certified DDR4 4GB 2666/2400/2133 MHz RAM
PWA-280WB-VT	280W, 24V, 85V AC to 264V AC Power Adaptor with 3-pin Terminal Block (7.62mm pitch), Wide Temperature -30°C to +70°C
PWS-360W	360W, 28.8V, 90 to 132V AC/180 to 264V AC (selected by switch) Power Supply
PWS-480W-VT	480W, 24V, 90V AC to 305V AC Power Supply, Wide-Temp, IP65
VESA Mount	VESA Mounting Kit
DIN-RAIL Kit	DIN Rail and VESA Mounting Kit
TMK2-20P-100	Terminal Block 20-pin to Terminal Block 20-pin Cable, 100cm
TMK2-20P-500	Terminal Block 20-pin to Terminal Block 20-pin Cable, 500cm
TMB-TMBK-20P	Terminal Board with One 20-pin Terminal Block Connector and DIN-Rail Mounting
4G Module	Mini PCIe 4G/GPS Module with Antenna
WiFi & Bluetooth	WiFi & Bluetooth Module with Antenna

Dimensions & Drawing

Unit : mm (inch)

ECX-1400 PEG



ECX-1300 PEG

